

Active Braille



The mobile Braille system with
Active Tactile Control (ATC)



***Touching
the Innovation***



Active Braille

Active Braille is the world's first 40 character Braille display with patented ATC technology. In addition of being an ergonomically optimized Braille display, Active Braille is also a powerful note taker on which you can store hundreds of books. In Bookworm mode, with automatic scrolling reading becomes a real pleasure on the Active Braille.



The Outstanding Braille Display

Just connect your Active Braille via USB to a PC and it is ready for you to use.

Handy Tech uses the latest HID technology (Human Interface Device) and sets new standards for Braille displays.



Active Braille also includes Bluetooth technology as a ready for use wireless connection to your PC and mobile phone.

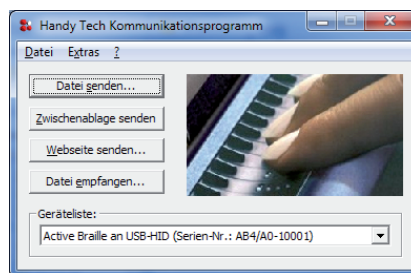
With Active Braille text can be entered directly on the ergonomically positioned Braille keyboard.

With Handy Tech's universal driver Active Braille is supported by all major screen readers. Whether you are using Windows based screen readers like Window-Eyes, HAL/Supernova, JAWS or Apple computers, even iPhones or iPads, Active Braille is the right choice for you. Connected wirelessly via Bluetooth, Active Braille provides complete access to all.

The Note Taker

Active Braille has solid note taker functions like editor, calculator, clock and many more. Hundreds of books can be stored on the 4 GB Micro SD card.

Notes transferred with the Handy Tech software HT-Com to a PC can directly be converted from grade two into normal text.

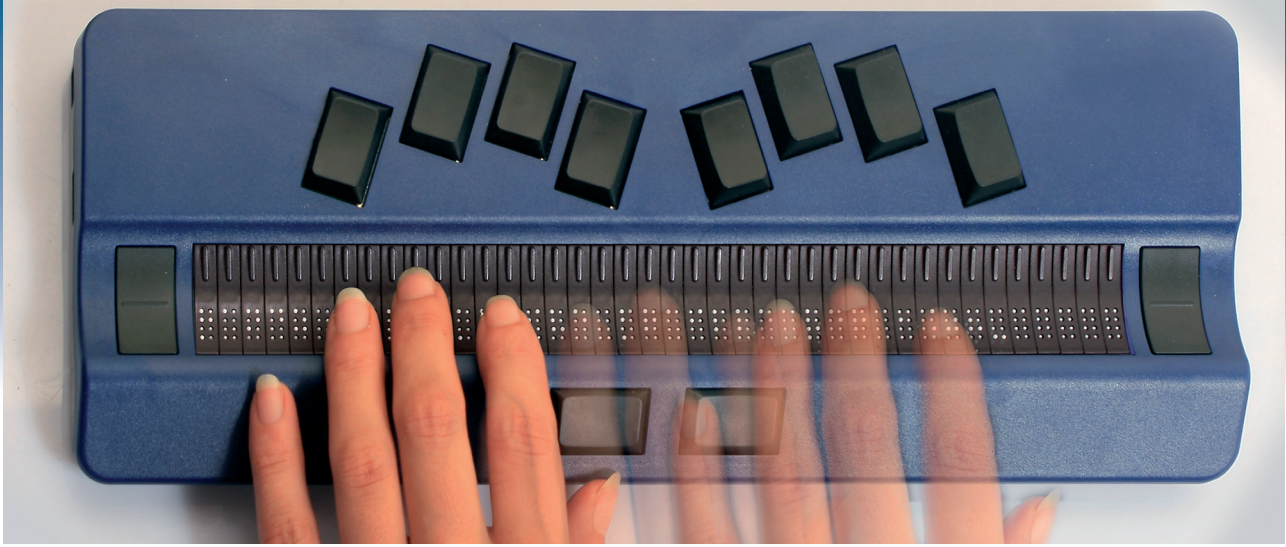


Innovative Technology

Active Braille is packed with innovation. With HID technology, on Active Braille it is no longer necessary to install a software driver. The patented ATC technology detects the reading position on the Braille display and with the Micro SD card, you can easily store and transfer files. Active Braille also allows you to set the firmness of the Braille display pins by the push of a button.

With two USB ports, Active Braille offers even more easy ways to connect it with other equipment, such as a standard keyboard, for example.





ATC Assistance Function

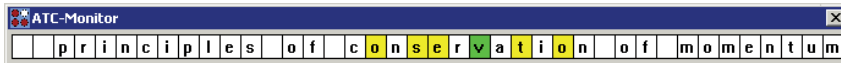
ATC technology not only enables Active Braille to forward automatically but also opens up new possibilities to use a PC.

Assistance functions increase and quicken access to information. ATC assistance can for example read out for you the complete row

or word of which you have touched the first letter.

ATC can also announce changes in text attributes at the reading position.

Active Braille can indicate that, for example, normal text has turned into bold text.



The ATC monitor shows the present reading position on the Braille display.

Analyzing the Reading Flow

The reading position can be observed in real time by a sighted person on the Braille monitor. ATC also allows to save the reading position in a log file. The reading behavior can be analyzed

with the software tool ATC-LogAnalyzer. The reading flow and the reading speed of each letter as well as the number of characters or words per minute are analyzed.

ATC Braille Frames

On the Active Braille, screen information shown in separate windows can be displayed in separate areas, so-called Braille frames.

ATC technology opens new possibilities. By detecting the reading position, you gain

parallel access to several applications.

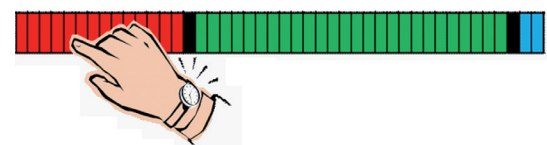
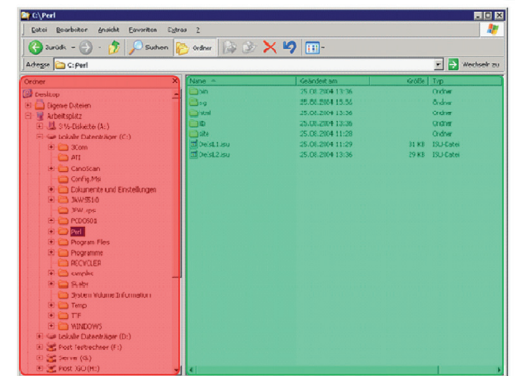
According to the reading position, the corresponding window is selected. Helpful scripts based on ATC like the task master make work at your PC even more comfortable.

Bookworm Mode

To read a book like "Gone with the Wind", with about 600,000 characters, on an ordinary Braille display completely, you need to push the advance button about 20,000 times.

Thanks to the Bookworm mode, Active Braille is different. Its unique ability to detect the tactile reading position makes it ideal for reading books.

In Bookworm mode the shown text automatically scrolls forwards after it was completely read on the Braille display. As there are no keys to press, with Active Braille you simply can enjoy the pleasures of reading.





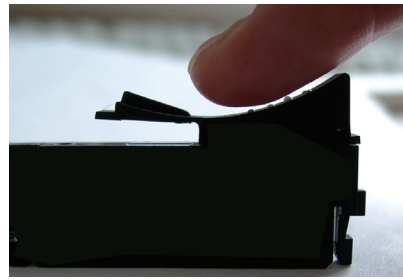
The Perfect Ergonomics

On the Active Braille, the Braille characters can be touched in a natural and relaxed hand position. Only the Handy Tech Braille cells are sloping backwards and are concavely shaped. The reading area is ideally shaped for the reading finger.

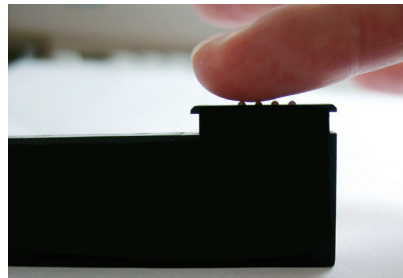
Mobility is the Key

Weighing only 900 g and with a battery life of 20 hours, Active Braille can be used everywhere. The batteries are fully recharged within 3 hours but also are easily exchanged. It's even possible to use standard AA batteries, if needed.

Active Braille comes with a handy carrying case, just open it and you can start to take notes. Your notes can be easily transferred to a PC where you can modify and print them.



Concave from Handy Tech



Flat and not ergonomic

Technical data:

- 40 piezoelectric Braille cells
- Bookworm mode
- Ergonomic Braille keyboard
- Patented ATC technology
- Adjustable Braille pin firmness
- Powerful note taking functions
- Micro SD card
- 4 GB text memory
- 2 triple action keys
- USB HID connection
- 2 USB ports (keyboard connection)
- Bluetooth Interface
- 20 hours battery life (rechargeable)
- Fast charging (3 hours)
- Dimensions: 317 x 123 x 28 mm
- Weight: 900 g



HIMS

HIMS Inc.

4616 W. Howard Lane, Suite 960,
Austin, Texas 78728

Tel: 888-520-4467

Fax: 512-837-2011

www.hims-inc.com
sales@hims-inc.com

